



WWW.BEA.GOV

## NEWS



**EMBARGOED FOR RELEASE: 9:00 A.M. EDT, Wednesday, April 23, 2003**

G. Andrew Bernat Jr. (202) 606-9235 (Analysis)

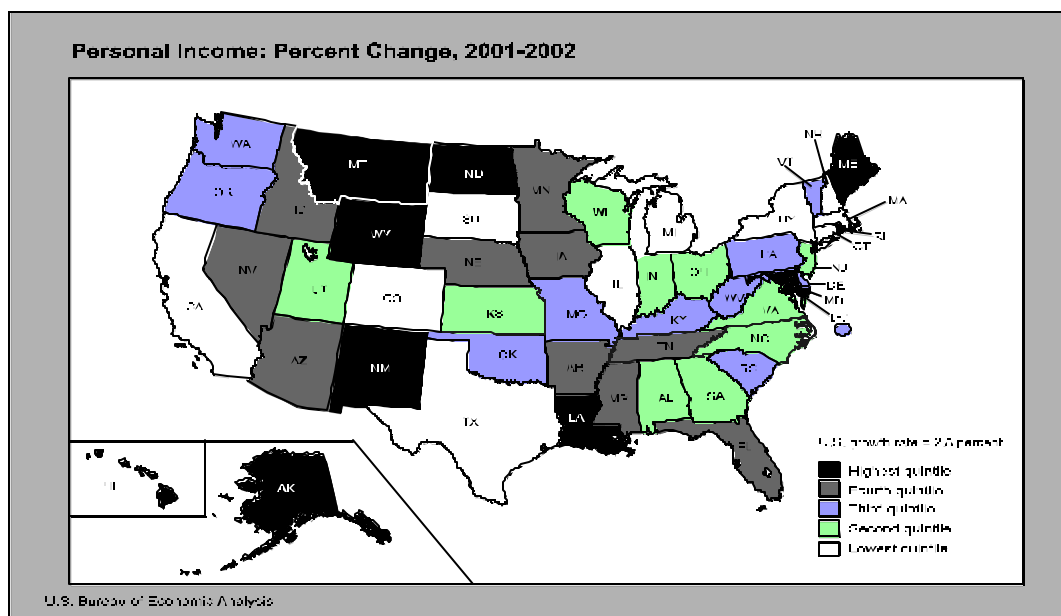
BEA 03- 12

Kathy Albetski: (202) 606-5360 (Estimates)

E-mail inquiries: [RegRelease@bea.gov](mailto:RegRelease@bea.gov)

## Preliminary 2002 Annual and Fourth Quarter State Personal Income and 2002 State Per Capita Personal Income

In 2002, 39 states and the District of Columbia had personal income growth above the national average of 2.8 percent, according to estimates released today by the U.S. Bureau of Economic Analysis. Personal income growth accelerated in 14 states in 2002, in contrast to only 2 states' growth accelerating in 2001. However, overall growth decelerated in 2002 because many of the most populous states were among the slowest-growing. The 10 slowest-growing states accounted for nearly 40 percent of the total population and included the large states of New York, California, and Texas, while the 10 fastest-growing states accounted for less than 7 percent (table 1).



Personal income for the nation grew 2.8 percent in 2002, down from an increase of 3.3 percent in 2001. This was the second consecutive year of slowing growth and the lowest annual growth rate in over 30 years. Seventeen states also experienced their lowest annual growth in over 30 years in 2002.

The slowdown in personal income growth in 2002, which is only available in current dollars, reflected decelerations in net earnings (earnings by place of residence) and in dividends, interest, and rent. Transfer payments grew slightly faster than in 2001 due to a large increase in unemployment benefit payments. Earnings declined in both farms and manufacturing and slowed in most other industries. A decline in interest income partially offset increases in dividend income and rental income.

### **Personal Income Growth by Component**

The pick-up in growth of transfer payments to 10.1 percent in 2002 from 9.4 percent in 2001 was largely the result of a near doubling of unemployment benefit payments from a year earlier. Unemployment benefit payments more than doubled in 14 states and the District of Columbia, and increased by less than 50 percent in only one state, Montana.

Net earnings grew 1.9 percent in 2002, down from 2.4 percent in 2001 and 7.8 percent in 2000 (table 2). Earnings decelerated in 26 states, with New York, Massachusetts, and Colorado experiencing declines in earnings. Before 2002, net earnings in New York had not declined since 1949. The deceleration in net earnings was not as widespread as in 2001 when net earnings decelerated in 46 states.

Property income (dividends, interest and rent) increased nationally by 1.0 percent in 2002, compared with increases of 2.4 percent 2001 and 10.6 percent in 2000. The slowdown in growth is attributable to a decline in interest income, due to low interest rates, as dividend income grew 6.0 percent and rental income grew 3.3 percent. Interest income decreased and dividends increased in all states, while North Dakota was the only state where rental income decreased.

### **Earnings Growth by Industry**

Nationally, earnings by place of work increased 2.0 percent, compared to increases of 2.5 percent in 2001 and 7.7 percent in 2000 (table 3). Government, especially military, contributed the most to earnings growth, followed by services. All other industries made substantially smaller contributions to earnings growth, with earnings in both manufacturing and farming declining (tables 4 and 5).

Government earnings growth contributed the most to total earnings growth in 26 states while services contributed the most in 21 states. In Iowa, farms contributed more than either government or services. In New York, a large decline in finance, insurance, and real estate more than offset growth in services and government. In Massachusetts, a large decline in manufacturing earnings, combined with small declines in transportation and public utilities, wholesale trade, and services, offset growth in the other major industries.

### **Per capita Personal Income**

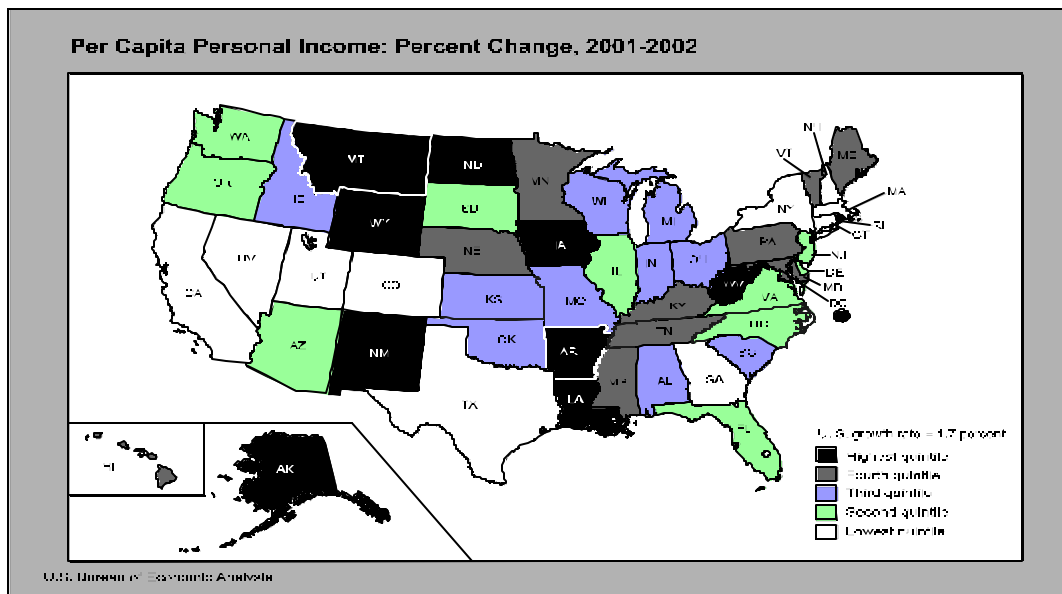
Per capita personal income grew 1.7 percent nationally as personal income grew 2.8 percent and population grew 1.1 percent (table 1). This was the first year since 1958 that per capita personal income growth was below two percent.

The fastest growing states, led by North Dakota, Montana, and Louisiana, each of which grew by more than 4 percent, tended to be relatively small, have below-average population growth rates, and have above-average shares of farms and mining earnings. The slowest growing states, which included the three most populous states (California, Texas, and New York) had

above average population growth. Nevada is notable because its population grew 3.6 percent or more than three times the national average.

The growth in per capita income resulted in very minor changes in state rankings and no changes in the states making up the top- and bottom-ten states.

The ten states with the highest per capita incomes in 2002 have all been in the top ten



since 1997. Connecticut, the state with the highest per capita income in 2002, has been the top state since 1986 and New Jersey, Massachusetts, Maryland, and New York have been in the top 10 every year since 1983.

	Per capita personal income [Dollars]							
States with Highest			Rank in the U.S.		Percent of the U.S. average		Percent	Rank of percent
Per Capita Income	2001r	2002p	2001	2002	2001	2002	change 2001-02	change, 2001-02
United States	30,413	30,941	--	--	100	100	1.7	--
Connecticut	42,377	42,706	1	1	139	138	0.8	46
New Jersey	38,625	39,453	3	2	127	128	2.1	32
Massachusetts	38,864	39,244	2	3	128	127	1.0	45
Maryland	35,279	36,298	5	4	116	117	2.9	18
New York	35,878	36,043	4	5	118	116	0.5	47
New Hampshire	33,969	34,334	6	6	112	111	1.1	42
Minnesota	33,059	34,071	8	7	109	110	3.1	17
Illinois	32,990	33,404	9	8	108	108	1.3	38
Colorado	33,455	33,276	7	9	110	108	-0.5	50
California	32,655	32,996	10	10	107	107	1.0	44

Just as there have been few changes in the top ten states, many of the states with the lowest per capita incomes in 2002 have been in the lowest group in recent years. Eight states have been in the bottom ten each year since 1997.

	Per capita personal income [Dollars]							
States with Lowest  Per Capita Income	2001r	2002p	Rank in the US		Percent of the US average		Percent change 2001-02	Rank of percent Change, 2001-02
			2001	2002	2001	2002		
United States	30,413	30,941	--	--	100	100	1.7	--
Louisiana	24,454	25,446	44	41	80	82	4.1	3
South Carolina	24,840	25,400	41	42	82	82	2.3	28
Alabama	24,477	25,128	43	43	80	81	2.7	21
Idaho	24,506	25,057	42	44	81	81	2.2	30
Montana	24,044	25,020	45	45	79	81	4.1	2
Utah	24,033	24,306	46	46	79	79	1.1	41
New Mexico	23,081	23,941	47	47	76	77	3.7	5
West Virginia	22,862	23,688	48	48	75	77	3.6	7
Arkansas	22,750	23,512	49	49	75	76	3.4	9
Mississippi	21,653	22,372	50	50	71	72	3.3	12

#### **Fourth Quarter Personal Income**

Personal income in the nation grew 0.9 percent in the fourth quarter of 2002, following a 0.5 percent increase in the third and consecutive 1.2 percent increases in the first two quarters of 2002 (table 5). The ten fastest growing states all had above-average net earnings growth, and 8 of the 10 had above-average growth in transfer payments. Nine of the 10 slowest growing states had below average net earnings growth. Net earnings grew at the national average rate in California but property-type income declined faster than in any other state (table 6).

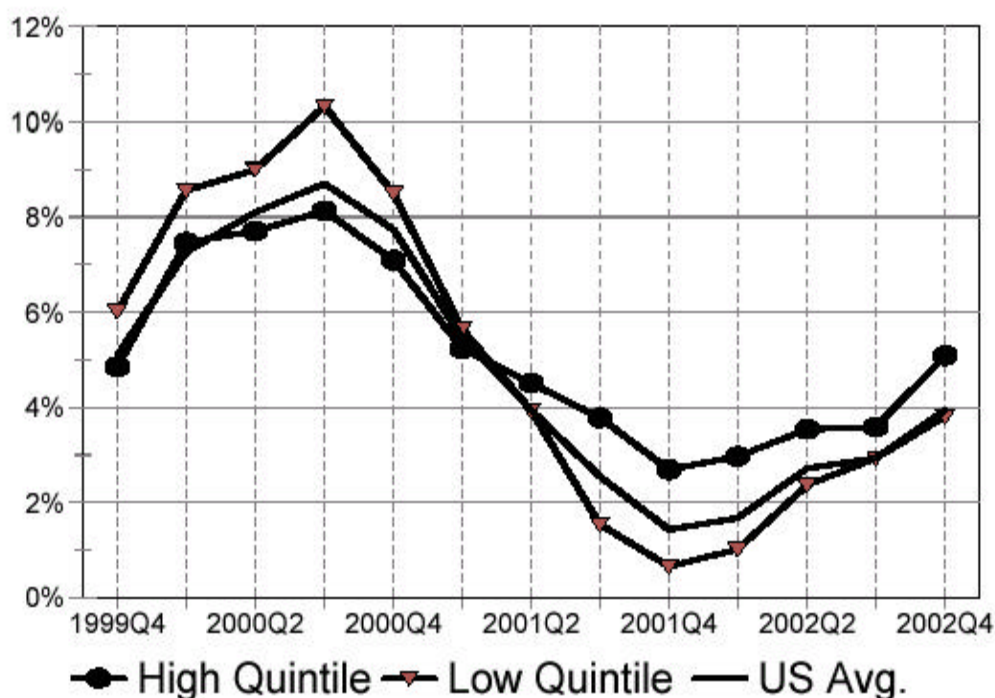
#### **Year to Year Trends in Quarterly State Personal Income Growth**

Because quarter-to-quarter changes in state personal income are subject to large swings, it is also useful to look at the change in state personal income in the current quarter relative to the same quarter a year ago. Table 7 and chart 2 show the year-to-year growth rates of quarterly state personal income from the fourth quarter of 1999 through the fourth quarter of 2002.

U.S. personal income increased 3.9 percent from the fourth quarter of 2001 to the fourth quarter of 2002, up from an increase of 2.9 percent in the previous four-quarter period. After peaking at an 8.7 percent annual increase in the third quarter of 2000, the annual change in U.S. personal income declined throughout 2001 and then turned upward in 2002. Similar patterns are evident for the top- and bottom-growth quintile states, where the quintiles are based on ranks of fourth quarter 2002 income growth. Year-to-year growth in personal income has been higher in the top quintile states than in the bottom quintile states since the second quarter of 2001.

In all states, growth from the fourth quarter of 2001 to the fourth quarter of 2002 was higher than from the third quarter of 2001 to the third quarter of 2002. Year over year growth in the fourth quarter ranged from 6.3 percent in Montana to 2.1 percent in South Dakota.

### Growth in Personal Income from the Same Quarter a Year Earlier



#### Note on the Estimates of State Personal Income

In the preliminary annual state personal income estimates presented here, U.S. personal income-the sum of the estimates for all states-increased 2.8 percent in 2002. This growth rate is the same as that in the personal income estimates in the national income and product accounts (NIPA's), which were released March 28, 2003. In July 2002, the NIPA's announced a new methodology and revision schedule for the quarterly estimates of wages and salaries that enabled the more timely incorporation of the comprehensive wage and salary tabulations of employees covered by state unemployment insurance from the Bureau of Labor Statistics. As a result of this change, the estimates for national wages and salaries in the NIPA's and state personal income for the year 2002 are both based on three quarters of comprehensive data from the state unemployment insurance program and an estimate for the fourth quarter based on monthly information from the BLS Current Employment Statistics survey. Both the NIPA and state personal income number will be revised when the unemployment insurance data for the fourth quarter become available.

#### Definitions

**Personal income** is the income received by all persons from participation in production, from government and business transfer payments, and from government interest. Personal income is the sum of net earnings by place of residence, rental income of persons, personal dividend income, personal interest income, and transfer payments. **Net earnings** is earnings by place of work (the sum of wage and salary disbursements (payrolls), other labor income, and proprietors' income) less personal contributions for social insurance, plus an adjustment to convert earnings by place of work to a place-of-residence basis. Personal income is measured

before the deduction of personal income taxes and other personal taxes and is reported in current dollars (no adjustment is made for price changes).

The estimate of personal income in the United States is derived as the sum of the state estimates; it differs from the estimate of personal income in the national income and product accounts (NIPA's) because of differences in coverage, in the methodologies used to prepare the estimates, and in the timing of the availability of source data.

BEA groups all 50 states and the District of Columbia into eight distinct regions for purposes of data collecting and analyses: **New England** (Connecticut, Maine, Massachusetts, New Hampshire, Rhode Island, and Vermont); **Mideast** (Delaware, District of Columbia, Maryland, New Jersey, New York, and Pennsylvania); **Great Lakes** (Illinois, Indiana, Michigan, Ohio, and Wisconsin); **Plains** (Iowa, Kansas, Minnesota, Missouri, Nebraska, North Dakota, and South Dakota); **Southeast** (Alabama, Arkansas, Florida, Georgia, Kentucky, Louisiana, Mississippi, North Carolina, South Carolina, Tennessee, Virginia, and West Virginia); **Southwest** (Arizona, New Mexico, Oklahoma, and Texas); **Rocky Mountain** (Colorado, Idaho, Montana, Utah, and Wyoming); and **Far West** (Alaska, California, Hawaii, Nevada, Oregon, and Washington).

BEA's major national, regional, international, and industry estimates; the *Survey of Current Business*; and BEA news releases are available without charge on BEA's Web site:

<[www.bea.gov](http://www.bea.gov)>

Summary BEA estimates are available on recorded messages at the time of public release at the following telephone numbers:

(202) 606-5306 Gross domestic product  
606-5303 Personal income and outlays  
606-5362 U.S. international transactions

Most of BEA's estimates and analyses are published in the *Survey of Current Business*, BEA's monthly journal. Subscriptions and single copies of the printed Survey are for sale by the Superintendent of Documents, U.S. Government Printing Office. Internet: <[bookstore.gpo.gov](http://bookstore.gpo.gov)>; phone: 202-512-1800; fax: 202-512-2250; mail: SSOP, Washington, DC 20402-0001.

\* \* \*

Next state personal income release – July 23, 2003, at 9:00 AM EDT for State Personal Income, First Quarter 2003.

Table 1. Per Capita Personal Income, Personal Income, and Population, by State and Region, 2001-2002

	Per capita personal income [Dollars]								Personal income [Millions of dollars]				Population [Thousands of persons]			
	2001r	2002p	Rank in the U.S.		Percent of the U.S. average		Percent change 2001-02	Rank of percent change, 2001-02	2001 r	2002 p	Percent change 2001-02	Rank of percent change, 2001-02	2001	2002	Percent change 2001-02	Rank of percent change, 2001-02
			2001	2002	2001	2002										
<b>United States .....</b>	<b>30,413</b>	<b>30,941</b>	--	--	<b>100</b>	<b>100</b>	<b>1.7</b>	--	<b>8,677,490</b>	<b>8,922,320</b>	<b>2.8</b>	--	<b>285,318</b>	<b>288,369</b>	<b>1.1</b>	--
<b>New England</b>																
Connecticut .....	42,377	42,706	1	1	139	138	0.8	46	145,548	147,784	1.5	47	3,435	3,461	0.8	26
Maine .....	26,853	27,744	34	33	88	90	3.3	13	34,491	35,913	4.1	10	1,284	1,294	0.8	25
Massachusetts .....	38,864	39,244	2	3	128	127	1.0	45	248,778	252,252	1.4	48	6,401	6,428	0.4	41
New Hampshire .....	33,969	34,334	6	6	112	111	1.1	42	42,779	43,778	2.3	43	1,259	1,275	1.2	19
Rhode Island .....	30,256	31,319	16	16	99	101	3.5	8	32,061	33,503	4.5	5	1,060	1,070	0.9	22
Vermont .....	28,756	29,567	24	24	95	96	2.8	19	17,627	18,231	3.4	24	613	617	0.6	33
<b>Mideast</b>																
Delaware .....	32,166	32,779	12	12	106	106	1.9	33	25,624	26,465	3.3	27	797	807	1.4	14
District of Columbia .....	40,539	42,120	--	--	133	136	3.9	--	23,262	24,046	3.4	--	574	571	-0.5	--
Maryland .....	35,279	36,298	5	4	116	117	2.9	18	190,015	198,119	4.3	8	5,386	5,458	1.3	16
New Jersey .....	38,625	39,453	3	2	127	128	2.1	32	328,743	338,912	3.1	34	8,511	8,590	0.9	23
New York .....	35,878	36,043	4	5	118	116	0.5	47	684,704	690,488	0.8	50	19,084	19,158	0.4	43
Pennsylvania .....	30,752	31,727	15	15	101	103	3.2	15	378,350	391,354	3.4	23	12,303	12,335	0.3	47
<b>Great Lakes</b>																
Illinois .....	32,990	33,404	9	8	108	108	1.3	38	413,044	420,913	1.9	45	12,520	12,601	0.6	30
Indiana .....	27,522	28,240	31	32	90	91	2.6	22	168,622	173,932	3.1	33	6,127	6,159	0.5	36
Michigan .....	29,629	30,296	18	18	97	98	2.3	29	296,480	304,490	2.7	41	10,006	10,050	0.4	39
Ohio .....	28,699	29,405	25	25	94	95	2.5	27	326,876	335,841	2.7	40	11,390	11,421	0.3	45
Wisconsin .....	29,196	29,923	20	21	96	97	2.5	26	157,832	162,818	3.2	32	5,406	5,441	0.7	29
<b>Plains</b>																
Iowa .....	27,225	28,280	33	31	90	91	3.9	4	79,822	83,051	4.0	12	2,932	2,937	0.2	48
Kansas .....	28,432	29,141	28	26	93	94	2.5	25	76,828	79,144	3.0	36	2,702	2,716	0.5	37
Minnesota .....	33,059	34,071	8	7	109	110	3.1	17	164,784	171,026	3.8	18	4,985	5,020	0.7	27
Missouri .....	28,221	28,936	30	27	93	94	2.5	23	159,093	164,143	3.2	30	5,637	5,673	0.6	31
Nebraska .....	28,861	29,771	23	22	95	96	3.2	16	49,642	51,480	3.7	20	1,720	1,729	0.5	35
North Dakota .....	25,798	26,982	38	36	85	87	4.6	1	16,422	17,109	4.2	9	637	634	-0.4	50
South Dakota .....	26,566	26,894	36	37	87	87	1.2	39	20,146	20,468	1.6	46	758	761	0.4	44
<b>Southeast</b>																
Alabama .....	24,477	25,128	43	43	80	81	2.7	21	109,388	112,737	3.1	35	4,469	4,487	0.4	42
Arkansas .....	22,750	23,512	49	49	75	76	3.4	9	61,304	63,720	3.9	15	2,695	2,710	0.6	34
Florida .....	29,048	29,596	21	23	96	96	1.9	34	475,607	494,648	4.0	14	16,373	16,713	2.1	3
Georgia .....	28,523	28,821	26	28	94	93	1.0	43	239,754	246,720	2.9	37	8,406	8,560	1.8	5
Kentucky .....	24,878	25,579	40	39	82	83	2.8	20	101,223	104,691	3.4	25	4,069	4,093	0.6	32
Louisiana .....	24,454	25,446	44	41	80	82	4.1	3	109,317	114,064	4.3	7	4,470	4,483	0.3	46
Mississippi .....	21,653	22,372	50	50	71	72	3.3	12	61,922	64,248	3.8	19	2,860	2,872	0.4	40
North Carolina .....	27,308	27,711	32	34	90	90	1.5	37	224,094	230,556	2.9	38	8,206	8,320	1.4	12
South Carolina .....	24,840	25,400	41	42	82	82	2.3	28	100,902	104,320	3.4	26	4,062	4,107	1.1	20
Tennessee .....	26,808	27,671	35	35	88	89	3.2	14	154,130	160,414	4.1	11	5,749	5,797	0.8	24
Virginia .....	32,338	32,922	11	11	106	106	1.8	36	232,730	240,115	3.2	31	7,197	7,294	1.3	15
West Virginia .....	22,862	23,688	48	48	75	77	3.6	7	41,174	42,682	3.7	21	1,801	1,802	0.0	49
<b>Southwest</b>																
Arizona .....	25,878	26,183	37	38	85	85	1.2	40	137,331	142,868	4.0	13	5,307	5,456	2.8	2
New Mexico .....	23,081	23,941	47	47	76	77	3.7	5	42,260	44,412	5.1	2	1,831	1,855	1.3	17
Oklahoma .....	24,945	25,575	39	40	82	83	2.5	24	86,550	89,350	3.2	28	3,470	3,494	0.7	28
Texas .....	28,472	28,551	27	30	94	92	0.3	48	608,466	621,832	2.2	44	21,371	21,780	1.9	4
<b>Rocky Mountain</b>																
Colorado .....	33,455	33,276	7	9	110	108	-0.5	50	148,239	149,958	1.2	49	4,431	4,507	1.7	6
Idaho .....	24,506	25,057	42	44	81	81	2.2	30	32,363	33,605	3.8	16	1,321	1,341	1.6	9
Montana .....	24,044	25,020	45	45	79	81	4.1	2	21,769	22,755	4.5	4	905	909	0.4	38
Utah .....	24,033	24,306	46	46	79	79	1.1	41	54,764	56,299	2.8	39	2,279	2,316	1.6	7
Wyoming .....	29,587	30,578	19	17	97	99	3.3	10	14,609	15,249	4.4	6	494	499	1.0	21
<b>Far West</b>																
Alaska .....	31,027	32,151	14	14	102	104	3.6	6	19,660	20,699	5.3	1	634	644	1.6	8
California .....	32,655	32,996	10	10	107	107	1.0	44	1,129,868	1,158,679	2.5	42	34,600	35,116	1.5	10
Hawaii .....	29,034	30,001	22	20	95	97	3.3	11	35,625	37,348	4.8	3	1,227	1,245	1.5	11
Nevada .....	30,128	30,180	17	19	99	98	0.2	49	63,200	65,596	3.8	17	2,098	2,173	3.6	1
Oregon .....	28,222	28,731	29	29	93	93	1.8	35	98,026	101,176	3.2	29	3,473	3,522	1.4	13
Washington .....	31,976	32,677	13	13	105	106	2.2	31	191,645	198,317	3.5	22	5,993	6,069	1.3	18
<b>BEA regions</b>																
New England.....	37,096	37,575	--	--	122	121	1.3	--	521,283	531,461	2.0	--	14,052	14,144	0.7	--
Mideast.....	34,952	35,580	--	--	115	115	1.8	--	1,630,698	1,669,385	2.4	--	46,655	46,919	0.6	--
Great Lakes.....	29,986	30,609	--	--	99	99	2.1	--	1,362,854	1,397,994	2.6	--	45,449	45,673	0.5	--
Plains.....	29,257	30,120	--	--	96	97	2.9	--	566,738	586,421	3.5	--	19,371	19,469	0.5	--
Southeast.....	27,169	27,779	--	--	89	90	2.2	--	1,911,543	1,978,917	3.5	--	70,357	71,237	1.3	--
Southwest.....	27,350	27,573	--	--	90	89	0.8	--	874,607	898,463	2.7	--	31,978	32,585	1.9	--
Rocky Mountain.....	28,819	29,029	--	--	95	94	0.7	--	271,743	277,866	2.3	--	9,429	9,572	1.5	--
Far West.....	32,025	32,435	--	--	105	105	1.3	--	1,538,024	1,581,814	2.8	--	48,026	48,769	1.5	--

r Revised.

p Preliminary.

Source: U.S. Bureau of Economic Analysis and Bureau of the Census

Table 2. Personal Income by Component, by State and Region, 2001-2002

	Percent change				Percent change in personal income	Contribution to percent change in personal income (percentage points)			Dollar change (millions)			
	Personal income	Net earnings/1	Dividends, interest, and rent	Transfer payments		Net earnings/1	Dividends, interest, and rent	Transfer payments	Personal income	Net earnings/1	Dividends, interest, and rent	Transfer payments
<b>United States .....</b>	<b>2.8</b>	<b>1.9</b>	<b>1.0</b>	<b>10.1</b>	<b>2.8</b>	<b>1.28</b>	<b>0.19</b>	<b>1.36</b>	<b>244,830</b>	<b>110,791</b>	<b>16,328</b>	<b>117,711</b>
<b>New England</b>												
Connecticut .....	1.5	0.7	0.7	8.2	1.5	0.51	0.13	0.90	2,236	744	187	1,305
Maine .....	4.1	3.8	1.3	8.7	4.1	2.38	0.26	1.48	1,422	821	88	512
Massachusetts .....	1.4	-0.3	1.1	11.3	1.4	-0.22	0.21	1.40	3,474	-535	520	3,489
New Hampshire .....	2.3	1.9	0.4	8.4	2.3	1.38	0.07	0.89	999	591	29	379
Rhode Island .....	4.5	3.9	0.9	10.6	4.5	2.48	0.18	1.84	1,442	795	56	591
Vermont .....	3.4	2.3	1.8	11.0	3.4	1.47	0.38	1.58	604	259	67	279
<b>Mideast</b>												
Delaware .....	3.3	2.8	0.6	10.0	3.3	1.93	0.12	1.23	841	494	32	316
District of Columbia .....	3.4	3.6	-0.2	7.7	3.4	2.47	-0.04	0.95	784	574	-10	220
Maryland .....	4.3	4.3	1.5	9.3	4.3	3.04	0.28	0.95	8,104	5,785	523	1,796
New Jersey .....	3.1	2.2	1.2	11.7	3.1	1.54	0.23	1.33	10,169	5,063	747	4,359
New York .....	0.8	-0.8	0.9	7.8	0.8	-0.53	0.16	1.21	5,785	-3,611	1,084	8,311
Pennsylvania .....	3.4	2.8	0.6	9.3	3.4	1.79	0.11	1.54	13,004	6,788	408	5,808
<b>Great Lakes</b>												
Illinois .....	1.9	1.0	1.2	8.6	1.9	0.67	0.24	0.99	7,869	2,776	998	4,095
Indiana .....	3.1	2.4	1.0	9.5	3.1	1.64	0.18	1.33	5,310	2,767	303	2,240
Michigan .....	2.7	1.6	0.5	10.7	2.7	1.08	0.09	1.53	8,010	3,191	268	4,550
Ohio .....	2.7	2.2	0.5	8.1	2.7	1.43	0.10	1.21	8,965	4,667	326	3,972
Wisconsin .....	3.2	2.5	0.7	10.2	3.2	1.67	0.14	1.34	4,986	2,642	227	2,117
<b>Plains</b>												
Iowa .....	4.0	4.2	1.0	7.7	4.0	2.75	0.21	1.09	3,228	2,195	165	868
Kansas .....	3.0	2.3	1.2	9.5	3.0	1.53	0.23	1.25	2,316	1,178	178	960
Minnesota .....	3.8	3.3	1.6	10.5	3.8	2.26	0.32	1.20	6,241	3,730	535	1,976
Missouri .....	3.2	2.5	0.3	9.5	3.2	1.65	0.06	1.46	5,049	2,631	92	2,326
Nebraska .....	3.7	3.2	1.6	9.5	3.7	2.12	0.35	1.23	1,838	1,050	176	612
North Dakota .....	4.2	4.6	1.2	6.6	4.2	2.86	0.26	1.07	688	469	43	176
South Dakota .....	1.6	0.0	2.3	7.4	1.6	0.02	0.54	1.03	322	5	109	208
<b>Southeast</b>												
Alabama .....	3.1	2.4	0.5	8.4	3.1	1.53	0.08	1.45	3,349	1,672	89	1,588
Arkansas .....	3.9	3.2	0.7	9.5	3.9	2.04	0.12	1.77	2,416	1,252	77	1,087
Florida .....	4.0	3.8	1.5	8.9	4.0	2.25	0.38	1.38	19,042	10,684	1,813	6,545
Georgia .....	2.9	2.1	1.5	10.1	2.9	1.48	0.25	1.18	6,966	3,555	588	2,824
Kentucky .....	3.4	2.7	0.9	8.8	3.4	1.72	0.16	1.55	3,468	1,739	157	1,572
Louisiana .....	4.3	3.6	0.8	10.0	4.3	2.33	0.14	1.88	4,747	2,544	150	2,053
Mississippi .....	3.8	2.6	0.9	9.8	3.8	1.62	0.14	2.00	2,326	1,002	87	1,237
North Carolina .....	2.9	1.7	0.5	11.4	2.9	1.16	0.08	1.64	6,462	2,596	189	3,678
South Carolina .....	3.4	2.3	0.9	10.7	3.4	1.52	0.16	1.72	3,419	1,530	157	1,732
Tennessee .....	4.1	3.7	0.2	9.3	4.1	2.51	0.03	1.53	6,285	3,870	50	2,365
Virginia .....	3.2	2.6	1.1	11.4	3.2	1.84	0.19	1.14	7,385	4,285	452	2,648
West Virginia .....	3.7	3.2	0.5	7.2	3.7	1.90	0.09	1.67	1,508	781	39	689
<b>Southwest</b>												
Arizona .....	4.0	3.2	1.4	11.6	4.0	2.16	0.27	1.60	5,537	2,962	374	2,201
New Mexico .....	5.1	4.7	1.4	10.6	5.1	3.09	0.25	1.75	2,151	1,304	106	741
Oklahoma .....	3.2	2.5	0.8	9.2	3.2	1.62	0.14	1.47	2,801	1,406	120	1,274
Texas .....	2.2	1.2	0.5	10.4	2.2	0.91	0.08	1.21	13,366	5,528	462	7,376
<b>Rocky Mountain</b>												
Colorado .....	1.2	0.0	1.4	10.9	1.2	-0.04	0.25	0.95	1,720	-53	366	1,406
Idaho .....	3.8	2.9	1.6	11.6	3.8	1.97	0.30	1.57	1,243	639	97	507
Montana .....	4.5	5.3	1.0	6.7	4.5	3.20	0.24	1.08	986	698	52	236
Utah .....	2.8	2.0	1.2	11.0	2.8	1.42	0.20	1.18	1,535	780	110	645
Wyoming .....	4.4	4.5	2.1	9.1	4.4	2.75	0.55	1.08	641	402	81	158
<b>Far West</b>												
Alaska .....	5.3	5.6	0.6	8.7	5.3	3.78	0.10	1.40	1,039	744	19	275
California .....	2.5	1.2	1.4	12.5	2.5	0.81	0.26	1.48	28,810	9,168	2,934	16,709
Hawaii .....	4.8	5.4	1.1	7.6	4.8	3.68	0.22	0.94	1,722	1,310	79	334
Nevada .....	3.8	3.4	0.5	12.8	3.8	2.35	0.11	1.34	2,395	1,484	67	844
Oregon .....	3.2	1.7	0.2	14.4	3.2	1.08	0.04	2.10	3,150	1,054	41	2,054
Washington .....	3.5	2.1	1.1	14.3	3.5	1.46	0.22	1.81	6,673	2,789	418	3,466
<b>BEA regions</b>												
New England.....	2.0	0.7	1.0	10.1	2.0	0.51	0.18	1.26	10,178	2,674	949	6,555
Mideast.....	2.4	1.4	0.9	9.0	2.4	0.93	0.17	1.28	38,687	15,092	2,784	20,811
Great Lakes.....	2.6	1.7	0.8	9.3	2.6	1.18	0.16	1.25	35,140	16,043	2,123	16,975
Plains.....	3.5	3.0	1.1	9.3	3.5	1.99	0.23	1.26	19,683	11,259	1,299	7,125
Southeast.....	3.5	2.8	1.0	9.7	3.5	1.86	0.20	1.47	67,374	35,509	3,848	28,018
Southwest.....	2.7	1.8	0.8	10.5	2.7	1.28	0.12	1.33	23,855	11,200	1,063	11,593
Rocky Mountain.....	2.3	1.3	1.4	10.4	2.3	0.91	0.26	1.09	6,123	2,465	706	2,952
Far West.....	2.8	1.6	1.2	12.7	2.8	1.08	0.23	1.54	43,790	16,549	3,558	23,682

1. Net earnings is earnings by place of work -- the sum of wage and salary disbursements (payrolls), other labor income, and proprietors' income -- less personal contributions for social insurance plus an adjustment to convert earnings by place of work to a place-of-residence basis.

Note: Estimates may not add to totals because of rounding.  
Source: U.S. Bureau of Economic Analysis



Table 3. Earnings by Major Industry, by State and Region, 2001-2002

	Percent change											
	Earnings by place of work/1	Earnings by industry										
		Farms	Mining	Construction	Durable goods manufacturing	Nondurable goods manufacturing	Transportation and public utilities	Wholesale trade	Retail trade	Finance, insurance, and real estate	Services	Government
<b>United States .....</b>	<b>2.0</b>	<b>-4.6</b>	<b>0.5</b>	<b>2.5</b>	<b>-4.1</b>	<b>-0.5</b>	<b>0.2</b>	<b>1.1</b>	<b>2.9</b>	<b>1.5</b>	<b>2.5</b>	<b>6.3</b>
<b>New England</b>												
Connecticut .....	1.1	-15.3	5.0	0.9	-5.6	-2.0	-1.6	0.1	3.0	3.0	1.6	5.7
Maine .....	4.1	-11.4	10.8	0.8	-2.2	-3.2	3.0	3.9	4.3	6.4	6.6	6.5
Massachusetts .....	-0.4	3.7	13.2	5.6	-8.8	-6.3	-1.6	-3.1	2.8	0.0	-0.5	5.4
New Hampshire .....	2.7	10.9	7.0	8.9	-9.7	-2.3	4.7	3.7	4.7	9.6	3.4	6.1
Rhode Island .....	4.7	9.8	6.5	9.9	-5.0	2.7	2.0	4.4	5.0	9.6	5.8	5.5
Vermont .....	2.5	-37.3	3.9	1.0	-5.4	-3.5	7.5	4.9	4.7	3.3	5.2	5.2
<b>Mideast</b>												
Delaware .....	2.9	-65.3	D/2	5.7	1.5	-6.6	2.6	6.5	5.1	3.6	4.8	9.5
District of Columbia .....	4.5	--	D/2	14.8	-6.8	-3.0	-2.6	4.2	3.2	3.3	4.6	5.1
Maryland .....	4.5	-9.3	-6.5	5.7	-1.1	-1.9	-2.9	2.6	4.1	5.1	5.2	7.9
New Jersey .....	3.0	9.4	-1.0	5.6	-3.9	-2.5	0.9	3.9	4.5	5.7	2.6	6.9
New York .....	-1.0	-20.2	5.3	1.1	-5.8	-5.2	-0.3	0.7	2.0	-6.5	1.2	3.8
Pennsylvania .....	2.9	-33.2	3.0	3.8	-3.2	2.4	2.9	2.1	3.2	2.7	4.1	5.7
<b>Great Lakes</b>												
Illinois .....	1.0	-27.9	5.9	2.2	-4.5	0.2	0.5	-1.2	1.9	2.8	1.2	4.5
Indiana .....	2.6	-66.0	6.2	4.3	2.5	0.7	0.7	0.2	2.7	1.0	4.8	4.6
Michigan .....	1.7	17.4	-1.7	0.2	-1.3	0.5	0.1	-1.7	1.4	3.9	3.4	5.6
Ohio .....	2.2	-56.9	-3.1	3.2	-3.1	2.6	1.5	0.8	2.8	5.0	3.1	5.9
Wisconsin .....	2.7	-16.5	7.0	1.2	-2.4	-0.5	1.7	3.1	3.7	4.0	5.6	4.9
<b>Plains</b>												
Iowa .....	4.3	55.7	7.9	4.0	-2.9	2.0	2.5	4.0	2.3	6.3	4.0	3.7
Kansas .....	2.4	-30.9	-3.4	2.3	-4.2	3.9	4.2	0.6	2.4	5.6	3.2	5.8
Minnesota .....	3.4	62.0	-3.6	4.0	-0.7	1.3	-2.2	3.9	4.6	1.4	4.1	6.3
Missouri .....	2.7	-43.0	-1.1	0.9	-0.5	1.3	2.4	2.1	3.6	3.2	4.0	4.5
Nebraska .....	3.4	-10.3	9.0	7.1	-1.9	-0.5	3.9	3.4	2.1	5.6	3.9	6.7
North Dakota .....	4.7	-2.9	-2.8	-0.7	2.7	1.7	3.9	3.3	3.7	4.1	6.6	7.9
South Dakota .....	0.5	-58.3	-14.5	4.6	-5.1	-1.3	3.3	3.6	4.3	3.6	7.2	7.3
<b>Southeast</b>												
Alabama .....	2.5	-39.9	5.2	-0.6	4.2	-5.2	1.7	3.0	3.2	5.2	5.5	4.5
Arkansas .....	3.4	-12.6	3.9	10.1	-1.4	-0.2	7.1	4.7	3.3	2.3	4.3	5.6
Florida .....	4.0	16.9	1.7	4.9	-0.9	-0.1	0.4	2.8	3.4	5.1	4.3	6.0
Georgia .....	2.1	-30.8	3.4	-0.4	-4.2	-0.1	0.5	-0.3	2.4	3.3	3.6	7.7
Kentucky .....	2.8	-9.3	3.8	-1.2	-0.7	0.7	-0.3	3.4	3.8	6.8	4.7	5.5
Louisiana .....	3.7	48.7	-3.2	-0.2	-0.6	0.4	1.2	3.9	3.2	4.1	4.8	7.8
Mississippi .....	2.7	-55.0	-3.4	14.2	-0.4	-2.7	2.7	4.2	3.1	5.2	5.5	4.7
North Carolina .....	1.8	-23.6	2.2	-1.8	-7.2	0.6	-0.8	4.2	2.2	5.3	3.9	6.9
South Carolina .....	2.4	-20.9	-2.7	1.8	-1.4	-2.0	2.7	4.4	1.9	5.6	3.6	5.2
Tennessee .....	3.8	17.8	-1.5	-0.8	-0.2	0.8	2.7	4.6	2.5	4.2	6.0	6.7
Virginia .....	2.3	-28.7	2.4	7.4	-2.1	-0.4	-2.2	-0.5	4.5	3.5	-0.1	6.9
West Virginia .....	3.4	58.4	1.9	-2.5	0.1	-3.7	-0.5	3.4	3.3	5.6	5.9	6.2
<b>Southwest</b>												
Arizona .....	3.3	34.7	-5.9	1.8	-5.4	-1.7	-0.2	0.5	4.2	3.0	4.6	8.6
New Mexico .....	4.9	-0.9	-5.7	-1.8	-6.2	0.1	-0.6	4.6	4.0	8.7	7.3	8.8
Oklahoma .....	2.5	-8.9	2.5	-1.6	-4.9	3.1	1.0	4.7	2.3	5.2	3.6	5.1
Texas .....	1.3	-0.5	1.3	0.6	-6.3	-0.4	-2.5	-3.0	2.1	2.4	2.3	7.7
<b>Rocky Mountain</b>												
Colorado .....	0.0	-6.0	-8.5	-1.2	-3.9	-1.5	-1.1	-1.7	1.6	-1.2	-1.8	8.4
Idaho .....	3.1	5.0	-1.2	-3.5	0.0	-2.5	4.7	0.9	2.2	3.7	5.3	6.3
Montana .....	5.5	4.8	0.5	3.3	-1.7	3.2	4.2	4.9	5.2	5.8	7.3	6.2
Utah .....	2.0	-19.9	-3.6	-3.7	-4.5	2.2	2.2	1.2	3.1	4.7	1.8	7.5
Wyoming .....	4.6	-64.6	2.7	9.3	3.0	-5.5	4.9	4.6	3.9	4.8	6.3	8.4
<b>Far West</b>												
Alaska .....	5.7	-9.1	-5.1	10.6	-2.8	2.2	4.2	6.3	5.4	3.1	7.8	7.1
California .....	1.2	22.0	1.7	3.0	-9.2	-1.5	-0.2	1.8	2.8	3.1	0.3	6.8
Hawaii .....	5.5	10.4	7.2	11.0	-0.6	-2.9	-5.4	3.3	1.8	8.1	5.0	9.3
Nevada .....	3.5	23.6	-1.7	4.1	-2.1	-1.7	-3.8	3.2	4.0	5.7	3.2	7.6
Oregon .....	1.7	15.0	10.4	1.0	-5.9	-0.3	-1.9	1.5	2.6	4.5	2.9	5.2
Washington .....	2.2	29.0	-0.8	2.3	-3.0	8.7	0.5	1.9	2.5	5.1	-1.3	8.0
<b>BEA regions</b>												
New England.....	0.9	-14.1	8.3	4.5	-7.3	-3.9	-0.4	-0.7	3.4	2.1	1.2	5.6
Mideast.....	1.5	-22.9	2.4	3.6	-4.1	-2.1	0.5	2.2	3.2	-2.8	2.8	5.5
Great Lakes.....	1.8	-34.5	1.8	2.2	-1.9	0.8	0.8	-0.2	2.4	3.4	3.0	5.1
Plains.....	3.1	3.3	-1.9	3.0	-1.7	1.5	1.8	2.9	3.5	3.5	4.1	5.5
Southeast.....	2.9	-17.5	0.4	2.3	-1.9	-0.5	0.7	2.4	3.1	4.6	3.8	6.4
Southwest.....	1.8	3.4	1.0	0.6	-6.0	0.0	-1.9	-1.8	2.6	2.8	3.0	7.6
Rocky Mountain.....	1.3	-5.5	-3.3	-1.1	-3.2	-0.7	0.5	-0.2	2.4	0.9	0.5	7.7
Far West.....	1.6	22.1	-0.2	3.2	-7.9	-0.3	-0.4	1.9	2.8	3.5	0.6	7.0

1. Earnings by place of work is the sum of wage and salary disbursements (payrolls), other labor income, and proprietors' income. Also included agricultural services, forestry, and fishing.

2. Data are suppressed to avoid disclosure of confidential information.  
Source: U.S. Bureau of Economic Analysis

Table 4. Contribution to Percent Change in Earnings, by State and Region, 2001-2002

	Percent change in earnings by place of work/1	Percentage points										
		Earnings by industry										
		Farms	Mining	Construction	Durable goods manufacturing	Non-durable goods manufacturing	Transportation and public utilities	Wholesale trade	Retail trade	Finance, insurance, and real estate	Services	Government
<b>United States .....</b>	<b>2.0</b>	<b>-0.03</b>	<b>0.00</b>	<b>0.15</b>	<b>-0.37</b>	<b>-0.03</b>	<b>0.01</b>	<b>0.07</b>	<b>0.26</b>	<b>0.15</b>	<b>0.74</b>	<b>1.00</b>
<b>New England</b>												
Connecticut .....	1.1	-0.03	0.01	0.05	-0.66	-0.11	-0.08	0.01	0.23	0.48	0.46	0.71
Maine .....	4.1	-0.06	0.00	0.06	-0.16	-0.23	0.15	0.20	0.50	0.45	1.91	1.20
Massachusetts .....	-0.4	0.00	0.01	0.32	-0.85	-0.29	-0.08	-0.19	0.23	0.00	-0.18	0.64
New Hampshire .....	2.7	0.01	0.01	0.66	-1.38	-0.11	0.20	0.27	0.55	0.74	1.01	0.69
Rhode Island .....	4.7	0.01	0.00	0.55	-0.50	0.13	0.11	0.21	0.49	0.84	1.87	1.00
Vermont .....	2.5	-0.41	0.01	0.07	-0.77	-0.16	0.38	0.23	0.48	0.19	1.54	0.84
<b>Mideast</b>												
Delaware .....	2.9	-0.54	D/2	0.36	0.07	-0.93	0.12	0.27	0.42	0.61	1.25	1.27
District of Columbia .....	4.5	--	D/2	0.16	-0.02	-0.05	-0.08	0.03	0.07	0.20	1.98	2.04
Maryland .....	4.5	-0.03	-0.01	0.42	-0.05	-0.07	-0.17	0.14	0.35	0.41	1.74	1.80
New Jersey .....	3.0	0.01	0.00	0.29	-0.19	-0.23	0.08	0.32	0.36	0.60	0.82	0.94
New York .....	-1.0	-0.03	0.01	0.04	-0.30	-0.25	-0.02	0.04	0.13	-1.50	0.38	0.52
Pennsylvania .....	2.9	-0.11	0.02	0.23	-0.32	0.21	0.21	0.12	0.28	0.22	1.28	0.74
<b>Great Lakes</b>												
Illinois .....	1.0	-0.10	0.02	0.13	-0.44	0.01	0.04	-0.08	0.15	0.31	0.38	0.60
Indiana .....	2.6	-0.37	0.02	0.29	0.49	0.05	0.05	0.01	0.24	0.07	1.13	0.64
Michigan .....	1.7	0.03	0.00	0.01	-0.29	0.03	0.01	-0.10	0.12	0.23	0.89	0.77
Ohio .....	2.2	-0.18	-0.01	0.19	-0.48	0.19	0.08	0.05	0.27	0.37	0.83	0.90
Wisconsin .....	2.7	-0.08	0.01	0.08	-0.35	-0.05	0.10	0.18	0.34	0.29	1.39	0.72
<b>Plains</b>												
Iowa .....	4.3	1.44	0.01	0.25	-0.34	0.15	0.16	0.25	0.22	0.52	0.96	0.62
Kansas .....	2.4	-0.38	-0.04	0.14	-0.46	0.23	0.40	0.04	0.22	0.37	0.77	1.03
Minnesota .....	3.4	0.38	-0.01	0.26	-0.07	0.09	-0.14	0.30	0.42	0.14	1.14	0.84
Missouri .....	2.7	-0.22	0.00	0.07	-0.05	0.09	0.20	0.14	0.34	0.27	1.13	0.70
Nebraska .....	3.4	-0.34	0.03	0.44	-0.12	-0.04	0.39	0.21	0.18	0.44	1.05	1.15
North Dakota .....	4.7	-0.07	-0.06	-0.05	0.14	0.05	0.33	0.24	0.35	0.26	1.72	1.78
South Dakota .....	0.5	-3.56	-0.06	0.28	-0.44	-0.05	0.21	0.21	0.43	0.29	1.79	1.38
<b>Southeast</b>												
Alabama .....	2.5	-0.69	0.05	-0.04	0.44	-0.40	0.11	0.17	0.29	0.31	1.35	0.90
Arkansas .....	3.4	-0.33	0.02	0.61	-0.15	-0.02	0.62	0.24	0.38	0.11	0.97	0.95
Florida .....	4.0	0.10	0.00	0.31	-0.04	0.00	0.02	0.18	0.37	0.51	1.50	0.96
Georgia .....	2.1	-0.32	0.01	-0.02	-0.26	-0.01	0.06	-0.02	0.21	0.25	1.01	1.22
Kentucky .....	2.8	-0.13	0.07	-0.08	-0.09	0.05	-0.02	0.19	0.37	0.37	1.10	1.02
Louisiana .....	3.7	0.22	-0.16	-0.02	-0.03	0.03	0.10	0.21	0.29	0.22	1.30	1.51
Mississippi .....	2.7	-1.18	-0.03	0.85	-0.05	-0.18	0.18	0.19	0.31	0.25	1.32	1.06
North Carolina .....	1.8	-0.38	0.00	-0.12	-0.75	0.06	-0.05	0.24	0.21	0.40	0.96	1.24
South Carolina .....	2.4	-0.17	0.00	0.13	-0.13	-0.21	0.18	0.21	0.20	0.35	0.83	1.06
Tennessee .....	3.8	0.05	0.00	-0.05	-0.02	0.06	0.21	0.28	0.26	0.31	1.74	0.94
Virginia .....	2.3	-0.08	0.01	0.46	-0.11	-0.02	-0.15	-0.03	0.36	0.26	-0.04	1.61
West Virginia .....	3.4	0.03	0.12	-0.15	0.01	-0.23	-0.04	0.15	0.30	0.24	1.56	1.36
<b>Southwest</b>												
Arizona .....	3.3	0.25	-0.03	0.15	-0.53	-0.03	-0.01	0.03	0.44	0.30	1.34	1.42
New Mexico .....	4.9	-0.02	-0.18	-0.12	-0.30	0.00	-0.04	0.17	0.40	0.43	2.01	2.49
Oklahoma .....	2.5	-0.10	0.14	-0.09	-0.40	0.20	0.08	0.22	0.22	0.28	0.88	1.07
Texas .....	1.3	0.00	0.06	0.04	-0.49	-0.02	-0.23	-0.21	0.19	0.19	0.62	1.10
<b>Rocky Mountain</b>												
Colorado .....	0.0	-0.04	-0.15	-0.10	-0.26	-0.04	-0.11	-0.09	0.14	-0.11	-0.55	1.25
Idaho .....	3.1	0.21	-0.01	-0.29	0.00	-0.11	0.30	0.05	0.22	0.20	1.28	1.14
Montana .....	5.5	0.08	0.01	0.26	-0.07	0.08	0.33	0.23	0.59	0.36	2.03	1.38
Utah .....	2.0	-0.14	-0.04	-0.28	-0.39	0.09	0.16	0.07	0.30	0.37	0.50	1.40
Wyoming .....	4.6	-0.90	0.41	0.80	0.06	-0.16	0.39	0.16	0.36	0.23	1.28	1.97
<b>Far West</b>												
Alaska .....	5.7	-0.01	-0.39	0.82	-0.03	0.06	0.44	0.15	0.46	0.13	1.74	2.25
California .....	1.2	0.17	0.01	0.18	-0.89	-0.06	-0.01	0.10	0.25	0.28	0.10	1.05
Hawaii .....	5.5	0.08	0.01	0.65	-0.01	-0.06	-0.42	0.11	0.20	0.63	1.50	2.76
Nevada .....	3.5	0.05	-0.03	0.41	-0.06	-0.03	-0.23	0.14	0.40	0.48	1.24	1.11
Oregon .....	1.7	0.14	0.01	0.07	-0.82	-0.01	-0.12	0.10	0.27	0.31	0.76	0.87
Washington .....	2.2	0.23	0.00	0.15	-0.30	0.30	0.04	0.11	0.23	0.35	-0.40	1.45
<b>BEA regions</b>												
New England.....	0.9	-0.02	0.01	0.26	-0.77	-0.20	-0.02	-0.04	0.29	0.27	0.38	0.72
Mideast.....	1.5	-0.05	0.01	0.18	-0.24	-0.13	0.03	0.12	0.23	-0.43	0.88	0.85
Great Lakes.....	1.8	-0.12	0.01	0.13	-0.29	0.06	0.05	-0.01	0.20	0.27	0.80	0.73
Plains.....	3.1	0.05	-0.01	0.19	-0.16	0.10	0.14	0.20	0.32	0.29	1.09	0.87
Southeast.....	2.9	-0.16	0.00	0.15	-0.15	-0.03	0.05	0.14	0.30	0.34	1.09	1.16
Southwest.....	1.8	0.02	0.04	0.04	-0.48	0.00	-0.16	-0.12	0.24	0.23	0.81	1.21
Rocky Mountain.....	1.3	-0.06	-0.07	-0.09	-0.23	-0.02	0.05	-0.01	0.22	0.07	0.14	1.31
Far West.....	1.6	0.17	0.00	0.20	-0.75	-0.01	-0.02	0.10	0.25	0.31	0.18	1.15

1. Earnings by place of work is the sum of wage and salary disbursements (payrolls), other labor income, and proprietors' income. Also included agricultural services, forestry, and fishing.

2. Data are suppressed to avoid disclosure of confidential information.  
Source: U.S. Bureau of Economic Analysis

**Table 5. Personal Income, by State and Region, 2001:IV-2002:IV**  
[Millions of dollars, seasonally adjusted at annual rates]

	2001	2002				Percent change from preceding quarter/1				Percent change 2001:IV- 2002:IV/2
	IV/r	I/r	II/r	III/r	IV/p	2002:I	2002:II	2002:III	2002:IV	
<b>United States.....</b>	<b>8,691,889</b>	<b>8,796,622</b>	<b>8,905,358</b>	<b>8,952,330</b>	<b>9,034,969</b>	<b>1.2</b>	<b>1.2</b>	<b>0.5</b>	<b>0.9</b>	<b>3.9</b>
<b>New England</b>										
Connecticut.....	144,542	146,249	147,399	148,255	149,233	1.2	0.8	0.6	0.7	3.2
Maine.....	34,753	35,361	35,763	36,095	36,433	1.7	1.1	0.9	0.9	4.8
Massachusetts.....	247,332	249,037	253,173	252,748	254,048	0.7	1.7	-0.2	0.5	2.7
New Hampshire.....	42,722	43,092	43,871	43,915	44,235	0.9	1.8	0.1	0.7	3.5
Rhode Island.....	32,261	32,970	33,387	33,673	33,983	2.2	1.3	0.9	0.9	5.3
Vermont.....	17,752	17,943	18,128	18,308	18,546	1.1	1.0	1.0	1.3	4.5
<b>Mideast</b>										
Delaware.....	25,780	26,245	26,476	26,556	26,583	1.8	0.9	0.3	0.1	3.1
District of Columbia.....	23,305	23,678	24,060	24,128	24,319	1.6	1.6	0.3	0.8	4.4
Maryland.....	191,170	194,927	197,461	198,668	201,420	2.0	1.3	0.6	1.4	5.4
New Jersey.....	330,559	334,765	337,735	340,183	342,966	1.3	0.9	0.7	0.8	3.8
New York.....	681,059	680,327	691,361	692,028	698,238	-0.1	1.6	0.1	0.9	2.5
Pennsylvania.....	379,292	386,395	390,504	392,894	395,624	1.9	1.1	0.6	0.7	4.3
<b>Great Lakes</b>										
Illinois.....	412,582	415,924	421,554	421,362	424,812	0.8	1.4	0.0	0.8	3.0
Indiana.....	168,955	170,763	173,057	174,584	177,324	1.1	1.3	0.9	1.6	5.0
Michigan.....	296,806	297,402	304,639	306,298	309,621	0.2	2.4	0.5	1.1	4.3
Ohio.....	327,985	330,957	335,347	337,396	339,664	0.9	1.3	0.6	0.7	3.6
Wisconsin.....	158,651	160,891	162,501	163,227	164,653	1.4	1.0	0.4	0.9	3.8
<b>Plains</b>										
Iowa.....	80,093	82,272	82,709	83,133	84,089	2.7	0.5	0.5	1.1	5.0
Kansas.....	77,138	78,608	78,640	79,274	80,055	1.9	0.0	0.8	1.0	3.8
Minnesota.....	165,325	167,709	170,318	172,339	173,737	1.4	1.6	1.2	0.8	5.1
Missouri.....	159,843	162,407	163,437	164,659	166,068	1.6	0.6	0.7	0.9	3.9
Nebraska.....	50,084	50,772	51,112	51,720	52,316	1.4	0.7	1.2	1.2	4.5
North Dakota.....	16,452	17,049	16,857	17,190	17,343	3.6	-1.1	2.0	0.9	5.4
South Dakota.....	20,347	20,208	20,273	20,623	20,768	-0.7	0.3	1.7	0.7	2.1
<b>Southeast</b>										
Alabama.....	109,825	111,266	112,263	113,189	114,230	1.3	0.9	0.8	0.9	4.0
Arkansas.....	61,927	62,677	63,608	63,957	64,637	1.2	1.5	0.5	1.1	4.4
Florida.....	478,882	486,466	493,674	496,419	502,034	1.6	1.5	0.6	1.1	4.8
Georgia.....	241,046	243,753	246,751	247,065	249,311	1.1	1.2	0.1	0.9	3.4
Kentucky.....	101,649	103,044	104,271	105,069	106,378	1.4	1.2	0.8	1.2	4.7
Louisiana.....	110,991	112,606	113,763	114,240	115,649	1.5	1.0	0.4	1.2	4.2
Mississippi.....	62,437	63,398	63,949	64,480	65,167	1.5	0.9	0.8	1.1	4.4
North Carolina.....	224,050	228,615	229,547	230,927	233,136	2.0	0.4	0.6	1.0	4.1
South Carolina.....	101,158	102,921	104,142	104,616	105,603	1.7	1.2	0.5	0.9	4.4
Tennessee.....	154,751	157,769	160,399	160,993	162,496	1.9	1.7	0.4	0.9	5.0
Virginia.....	233,388	235,614	239,265	241,700	243,881	1.0	1.5	1.0	0.9	4.5
West Virginia.....	41,608	42,191	42,547	42,790	43,199	1.4	0.8	0.6	1.0	3.8
<b>Southwest</b>										
Arizona.....	138,125	140,619	142,391	143,347	145,116	1.8	1.3	0.7	1.2	5.1
New Mexico.....	42,982	43,900	44,203	44,478	45,067	2.1	0.7	0.6	1.3	4.8
Oklahoma.....	87,221	88,287	88,938	89,605	90,571	1.2	0.7	0.7	1.1	3.8
Texas.....	609,717	615,609	621,723	622,290	627,707	1.0	1.0	0.1	0.9	3.0
<b>Rocky Mountain</b>										
Colorado.....	147,475	148,309	149,862	150,285	151,376	0.6	1.0	0.3	0.7	2.6
Idaho.....	32,507	33,364	33,226	33,715	34,116	2.6	-0.4	1.5	1.2	4.9
Montana.....	21,799	22,347	22,560	22,939	23,173	2.5	1.0	1.7	1.0	6.3
Utah.....	55,122	55,801	56,121	56,294	56,978	1.2	0.6	0.3	1.2	3.4
Wyoming.....	14,904	15,015	15,152	15,308	15,523	0.7	0.9	1.0	1.4	4.2
<b>Far West</b>										
Alaska.....	19,842	20,364	20,534	20,808	21,088	2.6	0.8	1.3	1.3	6.3
California.....	1,128,075	1,140,819	1,155,781	1,164,491	1,173,625	1.1	1.3	0.8	0.8	4.0
Hawaii.....	35,766	36,793	37,267	37,470	37,862	2.9	1.3	0.5	1.0	5.9
Nevada.....	63,020	64,543	65,267	65,863	66,708	2.4	1.1	0.9	1.3	5.9
Oregon.....	97,967	99,538	100,871	101,506	102,789	1.6	1.3	0.6	1.3	4.9
Washington.....	190,868	195,046	197,519	199,232	201,473	2.2	1.3	0.9	1.1	5.6
<b>BEA regions</b>										
New England.....	519,362	524,651	531,721	532,994	536,478	1.0	1.3	0.2	0.7	3.3
Mideast.....	1,631,164	1,646,338	1,667,597	1,674,457	1,689,149	0.9	1.3	0.4	0.9	3.6
Great Lakes.....	1,364,979	1,375,937	1,397,099	1,402,867	1,416,073	0.8	1.5	0.4	0.9	3.7
Plains.....	569,280	579,024	583,346	588,936	594,376	1.7	0.7	1.0	0.9	4.4
Southeast.....	1,921,712	1,950,320	1,974,180	1,985,445	2,005,722	1.5	1.2	0.6	1.0	4.4
Southwest.....	878,046	888,415	897,255	899,720	908,460	1.2	1.0	0.3	1.0	3.5
Rocky Mountain.....	271,806	274,836	276,922	278,541	281,166	1.1	0.8	0.6	0.9	3.4
Far West.....	1,535,539	1,557,102	1,577,239	1,589,370	1,603,545	1.4	1.3	0.8	0.9	4.4

r Revised.

p Preliminary.

1. Percent changes are expressed at quarterly rates.

2. Percent changes are expressed at annual rates.

Note: Estimates may not add to totals due to rounding.

Source: U.S. Bureau of Economic Analysis

Table 6. Personal Income by Component, by State and Region, 2002:III-2002:IV

	Percent change				Percent change in personal income	Contribution to percent change in personal income (percentage points)			Dollar change (millions)			
	Personal income	Net earnings/1	Dividends, interest, and rent	Transfer payments		Net earnings/1	Dividends, interest, and rent	Transfer payments	Personal income	Net earnings/1	Dividends, interest, and rent	Transfer payments
<b>United States .....</b>	<b>0.9</b>	<b>1.1</b>	<b>-0.4</b>	<b>1.6</b>	<b>0.9</b>	<b>0.77</b>	<b>-0.08</b>	<b>0.23</b>	<b>82,639</b>	<b>68,683</b>	<b>-6,786</b>	<b>20,742</b>
<b>New England .....</b>												
Connecticut .....	0.7	0.8	-0.4	1.4	0.7	0.56	-0.07	0.17	978	829	-98	247
Maine .....	0.9	0.9	-0.1	2.1	0.9	0.59	-0.02	0.37	338	215	-9	132
Massachusetts .....	0.5	0.8	-0.4	0.6	0.5	0.52	-0.08	0.08	1,300	1,317	-209	192
New Hampshire .....	0.7	0.9	-0.5	1.8	0.7	0.62	-0.09	0.20	320	273	-41	87
Rhode Island .....	0.9	1.1	-0.6	1.9	0.9	0.68	-0.11	0.34	310	230	-36	116
Vermont .....	1.3	1.5	-0.1	2.4	1.3	0.94	-0.01	0.38	238	171	-3	69
<b>Mideast .....</b>												
Delaware .....	0.1	-0.1	-0.6	2.4	0.1	-0.09	-0.12	0.32	27	-24	-33	84
District of Columbia .....	0.8	1.2	-0.4	0.4	0.8	0.82	-0.08	0.05	191	199	-19	12
Maryland .....	1.4	1.9	-0.7	1.7	1.4	1.33	-0.12	0.18	2,751	2,637	-242	356
New Jersey .....	0.8	1.2	-0.2	0.1	0.8	0.85	-0.04	0.01	2,783	2,903	-150	30
New York .....	0.9	1.1	-0.1	1.3	0.9	0.71	-0.03	0.21	6,210	4,914	-181	1,477
Pennsylvania .....	0.7	0.8	-0.3	1.2	0.7	0.53	-0.05	0.21	2,730	2,087	-182	825
<b>Great Lakes .....</b>												
Illinois .....	0.8	1.0	-0.2	1.3	0.8	0.70	-0.03	0.15	3,450	2,929	-132	653
Indiana .....	1.6	1.9	0.0	2.2	1.6	1.25	0.00	0.32	2,740	2,182	-5	563
Michigan .....	1.1	1.3	0.1	1.2	1.1	0.88	0.02	0.19	3,323	2,682	46	594
Ohio .....	0.7	0.7	-0.3	1.6	0.7	0.49	-0.06	0.25	2,268	1,638	-207	837
Wisconsin .....	0.9	1.0	-0.1	1.6	0.9	0.67	-0.02	0.23	1,426	1,087	-29	368
<b>Plains .....</b>												
Iowa .....	1.1	1.4	0.0	1.4	1.1	0.94	0.00	0.21	956	782	0	173
Kansas .....	1.0	1.1	0.0	1.9	1.0	0.72	0.00	0.27	782	573	-3	212
Minnesota .....	0.8	1.0	-0.2	1.5	0.8	0.68	-0.04	0.18	1,398	1,164	-71	304
Missouri .....	0.9	0.8	-0.3	2.4	0.9	0.52	-0.06	0.40	1,409	857	-99	652
Nebraska .....	1.2	1.3	0.2	2.0	1.2	0.83	0.04	0.28	596	430	21	145
North Dakota .....	0.9	1.0	0.0	1.6	0.9	0.63	-0.01	0.27	153	107	-1	47
South Dakota .....	0.7	0.7	0.0	1.7	0.7	0.46	0.00	0.25	145	94	0	51
<b>Southeast .....</b>												
Alabama .....	0.9	1.0	-0.5	1.9	0.9	0.64	-0.08	0.35	1,041	730	-90	401
Arkansas .....	1.1	1.2	-0.2	1.9	1.1	0.73	-0.04	0.37	681	465	-23	239
Florida .....	1.1	1.5	-0.2	1.9	1.1	0.87	-0.05	0.31	5,615	4,331	-253	1,537
Georgia .....	0.9	1.1	-0.6	2.1	0.9	0.76	-0.10	0.26	2,245	1,870	-259	635
Kentucky .....	1.2	1.6	-0.2	1.5	1.2	1.00	-0.04	0.29	1,309	1,049	-43	303
Louisiana .....	1.2	1.5	-0.2	1.6	1.2	0.94	-0.03	0.32	1,410	1,078	-38	370
Mississippi .....	1.1	1.0	-0.3	2.2	1.1	0.63	-0.05	0.48	686	405	-31	313
North Carolina .....	1.0	1.1	-0.6	2.1	1.0	0.75	-0.11	0.32	2,210	1,722	-256	743
South Carolina .....	0.9	1.1	-0.5	2.0	0.9	0.69	-0.09	0.34	987	726	-98	359
Tennessee .....	0.9	1.0	-0.8	2.2	0.9	0.68	-0.12	0.37	1,503	1,090	-189	603
Virginia .....	0.9	1.2	-0.8	2.1	0.9	0.83	-0.15	0.22	2,181	2,006	-358	533
West Virginia .....	1.0	1.1	-0.5	1.7	1.0	0.63	-0.09	0.41	409	270	-39	177
<b>Southwest .....</b>												
Arizona .....	1.2	1.5	-0.6	2.1	1.2	1.02	-0.11	0.32	1,769	1,465	-151	455
New Mexico .....	1.3	1.5	-0.4	2.3	1.3	0.99	-0.07	0.40	589	442	-33	180
Oklahoma .....	1.1	1.2	-0.4	2.1	1.1	0.80	-0.08	0.35	966	721	-67	313
Texas .....	0.9	1.0	-0.5	1.9	0.9	0.71	-0.07	0.24	5,417	4,409	-455	1,463
<b>Rocky Mountain .....</b>												
Colorado .....	0.7	0.9	-0.4	1.3	0.7	0.67	-0.06	0.12	1,091	1,005	-98	183
Idaho .....	1.2	1.4	-0.1	2.1	1.2	0.91	-0.03	0.30	400	308	-9	101
Montana .....	1.0	1.3	-0.1	1.7	1.0	0.78	-0.03	0.27	234	178	-6	62
Utah .....	1.2	1.5	-0.6	1.7	1.2	1.12	-0.10	0.20	685	628	-54	110
Wyoming .....	1.4	1.6	0.3	2.6	1.4	1.00	0.08	0.32	215	153	13	49
<b>Far West .....</b>												
Alaska .....	1.3	1.7	-0.1	1.3	1.3	1.15	-0.01	0.21	280	239	-3	43
California .....	0.8	1.1	-1.0	1.6	0.8	0.77	-0.19	0.21	9,134	8,924	-2,206	2,415
Hawaii .....	1.0	1.5	-0.5	0.6	1.0	1.06	-0.09	0.08	392	397	-35	30
Nevada .....	1.3	1.8	-0.5	1.6	1.3	1.20	-0.10	0.18	845	793	-66	119
Oregon .....	1.3	1.5	-0.2	2.4	1.3	0.93	-0.05	0.38	1,283	947	-52	388
Washington .....	1.1	1.5	-0.5	1.4	1.1	1.03	-0.10	0.20	2,241	2,053	-203	390
<b>BEA regions .....</b>												
New England .....	0.7	0.8	-0.4	1.2	0.7	0.57	-0.07	0.16	3,484	3,036	-396	843
Mideast .....	0.9	1.1	-0.3	1.1	0.9	0.76	-0.05	0.17	14,693	12,716	-807	2,783
Great Lakes .....	0.9	1.1	-0.1	1.5	0.9	0.75	-0.02	0.21	13,206	10,518	-327	3,015
Plains .....	0.9	1.0	-0.1	1.9	0.9	0.68	-0.03	0.27	5,440	4,008	-153	1,585
Southeast .....	1.0	1.2	-0.4	1.9	1.0	0.79	-0.08	0.31	20,277	15,741	-1,677	6,213
Southwest .....	1.0	1.1	-0.5	2.0	1.0	0.78	-0.08	0.27	8,740	7,036	-707	2,411
Rocky Mountain .....	0.9	1.2	-0.3	1.6	0.9	0.82	-0.06	0.18	2,625	2,273	-154	506
Far West .....	0.9	1.2	-0.9	1.6	0.9	0.84	-0.16	0.21	14,175	13,354	-2,565	3,386

1. Net earnings is earnings by place of work -- the sum of wage and salary disbursements (payrolls), other labor income, and proprietors' income -- less personal contributions for social insurance plus an adjustment to convert earnings by place of work to a place-of-residence basis.

Note: Estimates may not add to totals because of rounding.  
Source: U.S. Bureau of Economic Analysis

**Table 7. Year over year growth, by State, 1999:IV-2002:IV**

[Seasonally adjusted]

	Percent change												
	Year over year growth												
	1999Q4	2000Q1	2000Q2	2000Q3	2000Q4	2001Q1	2001Q2	2001Q3	2001Q4	2002Q1	2002Q2	2002Q3	2002Q4
<b>United States.....</b>	5.1	7.3	8.1	8.7	7.7	5.5	3.9	2.5	1.4	1.7	2.7	2.9	3.9
Indiana.....	3.6	6.5	7.3	7.6	4.9	3.6	2.4	1.7	2.2	1.5	2.8	3.3	5.0
Wyoming.....	6.7	6.0	6.8	6.5	7.7	5.9	6.0	6.6	4.8	5.2	4.4	3.8	4.2
Maryland.....	5.3	7.2	7.9	8.4	8.8	6.7	5.9	4.6	2.9	3.5	4.0	4.2	5.4
Alaska.....	3.5	6.4	6.7	8.0	6.3	4.6	5.2	4.5	3.9	5.3	4.4	5.1	6.3
New Mexico.....	2.6	4.6	5.3	5.6	5.4	6.9	6.0	6.7	6.2	5.9	5.3	4.3	4.8
Vermont.....	6.2	7.3	8.3	7.0	7.7	6.9	5.3	5.3	3.5	2.8	2.9	3.5	4.5
Nevada.....	5.8	7.3	9.1	9.4	8.1	7.1	5.7	5.3	2.3	3.2	2.9	3.2	5.9
Oregon.....	5.0	7.2	7.6	8.1	5.9	4.7	3.0	1.6	1.4	1.6	3.0	3.4	4.9
Kentucky.....	4.3	7.8	7.9	8.2	6.9	4.1	3.4	3.0	1.9	2.6	3.3	3.2	4.7
Arizona.....	6.2	10.4	8.1	8.9	8.5	5.0	5.9	5.2	3.2	3.7	3.9	3.4	5.1
Louisiana.....	2.0	4.1	4.6	5.3	4.5	5.4	5.1	5.8	5.6	4.9	4.7	3.6	4.2
Utah.....	4.4	7.4	7.7	7.3	7.0	5.2	4.7	4.1	3.1	3.1	2.4	2.3	3.4
Idaho.....	7.7	8.1	8.7	8.1	6.6	5.0	4.1	3.8	2.4	4.1	2.7	3.7	4.9
Nebraska.....	5.9	5.4	6.1	5.7	3.2	5.3	4.3	3.7	3.8	3.4	3.3	3.7	4.5
Iowa.....	2.8	6.4	8.0	6.9	5.2	4.3	2.5	2.2	1.8	3.6	3.8	3.7	5.0
Florida.....	4.8	6.1	6.8	7.6	7.9	5.9	5.1	4.2	2.8	3.4	3.9	3.8	4.8
Washington.....	8.4	9.3	9.2	6.3	4.5	1.2	4.6	3.4	1.1	3.2	1.7	3.5	5.6
Michigan.....	4.3	6.8	6.4	6.1	4.8	1.6	1.4	1.2	0.9	0.5	2.9	3.1	4.3
Oklahoma.....	4.7	5.6	6.8	8.2	7.4	6.5	4.8	3.6	2.6	3.0	3.0	3.1	3.8
Mississippi.....	3.3	4.9	5.7	5.1	3.9	4.9	3.7	3.4	3.7	3.2	3.6	3.8	4.4
Arkansas.....	4.2	5.2	5.3	6.5	4.6	4.9	4.3	3.2	3.8	3.3	4.2	3.9	4.4
Hawaii.....	3.2	4.8	6.0	4.8	6.0	5.4	3.4	3.8	1.9	3.7	5.1	4.6	5.9
Montana.....	3.6	6.0	6.4	9.0	6.2	6.3	5.6	5.0	3.0	3.8	3.8	4.2	6.3
Kansas.....	4.5	4.4	6.5	7.7	3.6	6.3	4.0	2.7	3.1	3.0	2.7	2.5	3.8
North Carolina.....	5.0	6.5	7.2	9.4	7.1	5.2	3.5	2.0	1.1	2.1	2.4	3.0	4.1
West Virginia.....	2.6	4.5	5.7	5.4	5.4	5.2	4.3	4.3	3.7	3.7	3.6	3.5	3.8
South Carolina.....	4.6	6.6	7.5	7.3	6.4	5.8	3.3	3.2	2.1	2.3	3.6	3.2	4.4
Maine.....	3.6	7.7	7.7	5.8	7.4	6.8	5.0	4.4	3.7	3.3	4.0	4.4	4.8
Tennessee.....	5.3	6.7	6.3	6.6	5.6	3.8	3.2	2.5	1.7	3.2	4.2	3.9	5.0
Rhode Island.....	3.8	6.4	7.1	7.1	7.0	5.7	4.7	4.1	2.8	3.6	4.6	4.4	5.3
Alabama.....	4.2	5.0	5.3	5.1	4.7	4.7	3.9	3.7	2.6	2.5	2.7	3.1	4.0
Georgia.....	6.3	7.9	8.6	9.1	7.9	5.2	4.1	3.1	2.1	2.4	3.2	2.6	3.4
Virginia.....	5.8	6.3	9.0	9.3	8.6	7.1	6.3	3.9	2.6	2.1	2.3	3.9	4.5
New York.....	3.8	5.5	8.3	7.7	10.6	6.8	3.4	2.0	-0.6	-1.6	1.1	1.4	2.5
North Dakota.....	1.9	8.2	8.8	9.5	5.3	3.7	1.9	2.4	2.1	4.6	2.8	4.0	5.4
Wisconsin.....	4.7	6.2	6.6	6.6	5.7	4.9	3.6	3.2	2.1	2.7	3.3	2.9	3.8
Texas.....	5.8	8.3	8.9	9.8	8.0	6.5	4.1	2.6	1.8	1.2	2.6	2.1	3.0
Missouri.....	3.9	6.2	7.6	8.1	6.7	5.0	3.2	2.7	2.1	2.8	3.0	3.0	3.9
Illinois.....	3.5	6.6	7.2	8.4	7.7	5.3	3.3	2.2	0.5	0.6	2.3	1.7	3.0
New Jersey.....	4.2	7.3	10.8	11.5	11.1	6.5	3.5	2.7	0.8	2.5	3.0	3.1	3.8
Minnesota.....	5.2	7.0	8.1	9.0	8.2	6.3	4.1	2.8	1.4	2.2	3.5	4.4	5.1
District Of Colum.....	3.0	8.9	10.0	10.1	10.6	3.6	2.8	1.5	-0.6	2.3	3.2	3.7	4.4
California.....	7.3	9.9	10.3	12.5	9.6	5.9	4.1	0.5	0.3	0.7	2.3	3.2	4.0
New Hampshire.....	5.5	12.1	11.2	11.0	10.4	6.0	4.9	2.9	1.0	0.4	2.6	2.8	3.5
Colorado.....	9.6	9.5	11.7	13.7	10.7	9.0	4.6	1.4	-0.1	-0.4	1.0	1.5	2.6
South Dakota.....	5.6	7.4	6.4	5.6	3.9	3.2	3.0	3.6	3.2	1.7	0.9	1.7	2.1
Pennsylvania.....	3.7	6.0	6.7	7.4	7.1	5.4	4.0	3.2	1.4	2.7	3.4	3.4	4.3
Ohio.....	3.7	5.5	5.2	5.4	4.0	2.4	2.5	2.3	1.8	2.0	2.7	2.8	3.6
Connecticut.....	4.7	7.7	8.6	8.5	8.4	6.3	3.9	1.8	-0.1	-0.1	1.0	2.0	3.2
Massachusetts.....	6.7	11.4	11.3	12.3	10.8	6.3	4.4	1.1	-0.3	-0.6	1.7	1.8	2.7
Delaware.....	4.5	5.8	8.0	8.2	8.5	6.5	5.7	4.8	2.3	3.9	3.4	2.7	3.1

Note: States ranked according to 2002Q3 to 2002Q4 growth